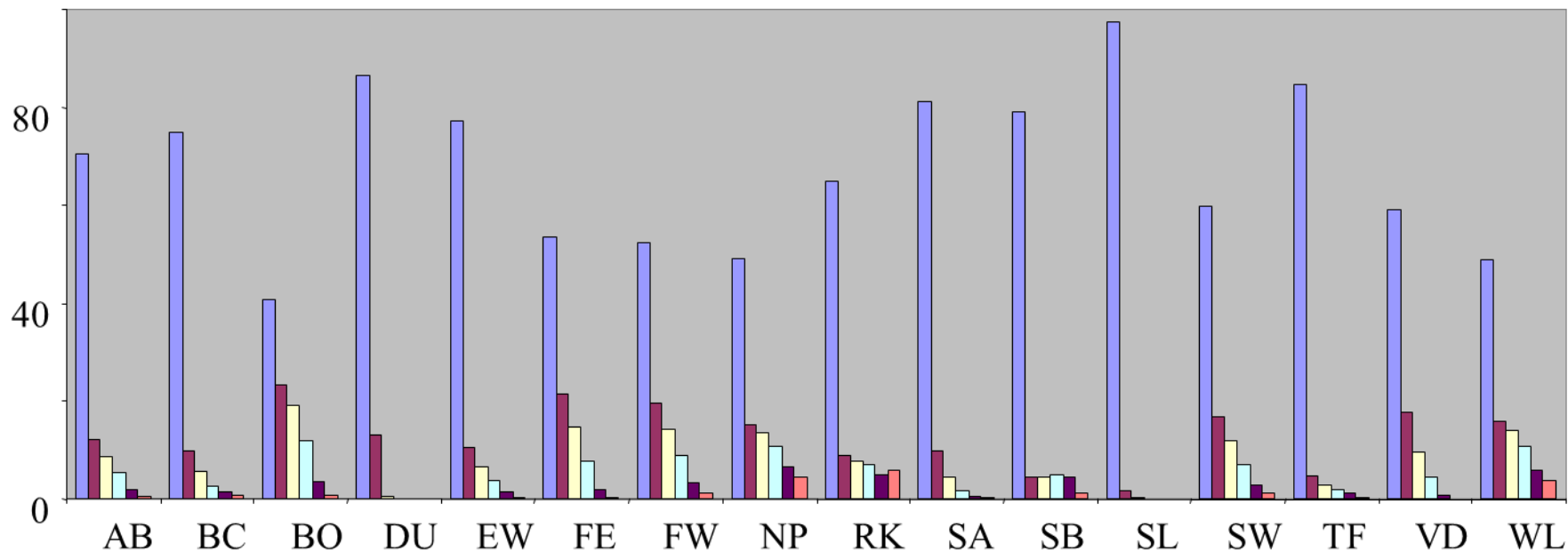


Percentage of the NB-DNR wetland areas falling into specific DEM-derived depth-to-water classes, by wetland type



NB-DNR Wetland Classes

AB: aquatic bed

BC: beach

BO: bog

DU: dune

EW: emergent wetland

FE: fen

FW: forested wetland

NP : non-productive forest

RK: rock outcrop

SA: salt marsh

SB: shrub wetland

SL: salt lake

SW: shrub wetland

TF: tidal flat

VD: vegetated dune

WL: wetland

Classes of predicted depth to water below soil surface, at normal at high water mark (all flow channels filled)

